



**122 Series Power Line Chokes**

**Features**

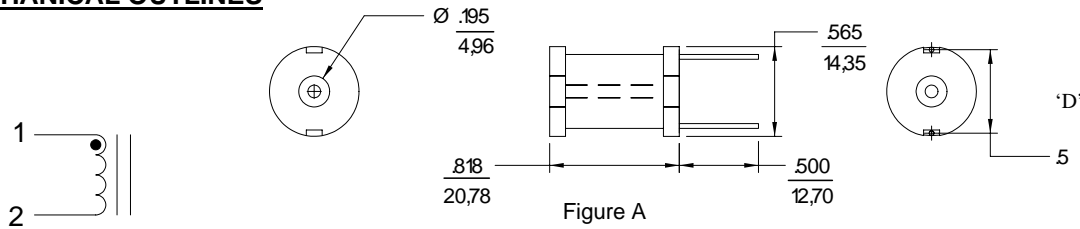
- Ideal for use in Switching Regulators, SCR Controls, RFI Suppression etc
- Low Cost
- Excellent Temperature Stability
- Wide Inductance Values and Current Ratings
- Hi-pot 1000 VAC RMS
- Operating Frequency 100kHz to 1.0 MHz
- Tinned Leads with Leaded Solder is Available (note 2)



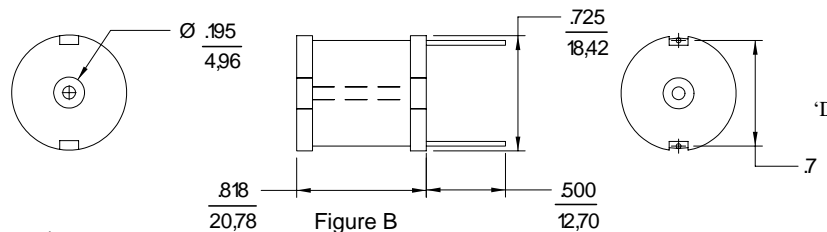
**ELECTRICAL SPECIFICATIONS AT 25°C**

Part Number	Inductance @ 0 DC $\mu\text{H}\pm 10\%$	DCR Ohms (Max)	Saturation Current (DC Amps)	Rated Current (Amps)	Dimension 'D' Approx. In Inches	Pin Diameter inches / mm	Figure
PT12210	22	0.009	15.8	5.5	.500	0.038 / 0.96	A
PT12211	27	0.025	14.4	4.5	.500	0.035 / 0.90	A
PT12212	33	0.033	13.2	4.0	.406	0.031 / 0.80	A
PT12213	39	0.038	11.8	4.0	.469	0.031 / 0.80	A
PT12214	47	0.042	11.0	2.8	.469	0.028 / 0.70	A
PT12215	56	0.052	10.0	2.8	.485	0.028 / 0.70	A
PT12216	68	0.053	8.9	2.8	.500	0.028 / 0.70	A
PT12217	82	0.061	8.2	2.8	.500	0.028 / 0.70	A
PT12218	100	0.068	7.5	2.8	.500	0.028 / 0.70	A
PT12220	27	0.015	20.5	5.5	.546	0.039 / 1.00	B
PT12221	33	0.017	18.6	5.5	.546	0.039 / 1.00	B
PT12222	39	0.018	17.0	5.5	.594	0.039 / 1.00	B
PT12223	47	0.026	15.1	5.5	.625	0.039 / 1.00	B
PT12224	56	0.030	13.6	5.5	.625	0.039 / 1.00	B
PT12225	68	0.033	12.7	4.8	.656	0.035 / 0.90	B
PT12226	82	0.035	11.3	4.8	.656	0.035 / 0.90	B
PT12227	100	0.060	10.4	4.0	.593	0.031 / 0.80	B
PT12228	120	0.072	9.4	4.0	.593	0.031 / 0.80	B
PT12229	150	0.075	8.6	4.0	.593	0.031 / 0.80	B
PT12230	180	0.078	7.8	4.0	.671	0.031 / 0.80	B
PT12231	220	0.119	7.0	2.8	.593	0.028 / 0.70	B
PT12232	270	0.150	6.3	2.0	.562	0.028 / 0.70	B

**MECHANICAL OUTLINES**



**SCHEMATIC**



Tolerance:  $\frac{\text{INCHES .XXX} \pm .010}{\text{MILLIMETERS ,XX} \pm .25}$

**Notes:**

1. Inductance measured at 1 KHz, 25°C and zero DC current using HP4277A LCZ meter.
2. For non-RoHS parts, replace PT prefix with 42- (e.g. PT12210 becomes 42-12210).
3. Terminal finish is compliant to RoHS requirements

DATATRONIC: 28151 Highway 74, Romoland, CA 92585 Tel: 951-928-7700 Toll Free Tel: 888-889-5391 Fax: 951-928-7701

Email: ddisales@datatronics.com

499 King's Road, Hong Kong Tel: (852) 2562 3858, (852) 2564 8477 Fax: (852) 2565 7214, (852) 2563 1290

All specifications are subject to change without notice.